



50" class 1080p LED LCD HDTV

FW50D36F



Product Specifications

TV

- Screen Size: 50" class (49.5 inches measured diagonally)
- Resolution: 1080p, 1920 x 1080 pixels
- Adaptive 3D Y/C Comb Filter
- Pix Shape: 4:3(SD), 16:9(HD), Movie expand, Wide, Zoom
- 6-Picture Menu (5 Preset, Custom)
- 6-Sound Menu (5 Preset, Custom)
- 5 Band Equalizer
- Speaker Output Power : 10W + 10W

TUNER

- Built-in ATSC / NTSC (HD Quality Output)
- Child Lock: Channel Lock, Downloadable Rating (V-Chip2.0)

CONVENIENCE

- Closed Caption
- Auto Volume Control
- Trilingual On-Screen Display (English / Spanish / French)
- Sleep Timer (up to 120 min.)
- JPEG Photo Viewer (via USB Flash Memory)
- Motion JPEG playback (via USB Flash Memory, 320x240 30fps)
- Auto Shut Off
- VESA Mount 300 x 200

WEIGHT & DIMENSIONS [Width x Height x Depth]

- TV with stand : 45.0" x 29.1" x 8.6" / 24.7 lbs.
- TV w/o stand : 45.0" x 27.1" x 4.3" / 24.3 lbs.
- Packaged : 51.6" x 30.3" x 6.9" / 33.7 lbs.

ACCESSORIES

- Remote Control (Batteries not included)
- Owner's Manual : English & Spanish & French
- Quick Setup Guide : English & Spanish & French

INPUT

[REAR]

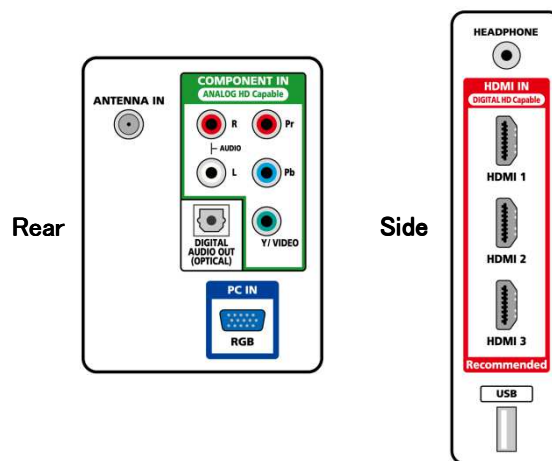
- RF Input : 1 set
- Component video (HD/SD)/VIDEO +Audio L/R : 1 set
- PC Input (VGA D-sub 15 pin) : 1 set

[SIDE]

- HDMI : 3 set
- USB (photo, movie) : 1 set

OUTPUT

- Digital Audio Output (Optical) : 1 set
- Headphone output (Headphone not included): 1 set



Remote Control



SANYO is a registered trademark of SANYO Electric Co., Ltd. and is used by Funai Electric Co., Ltd. and Funai Corporation, Inc. under license from SANYO Electric Co., Ltd. Any liability related to SANYO products, including design and quality, is the sole responsibility of Funai Electric Co., Ltd. and Funai Corporation, Inc. Please contact Funai Corporation, Inc. for any questions or claims related to SANYO products: sanyo-av.com. The terms HDMI and HDMI High-Definition Multimedia Interface, and the HDMI Logo are trademarks or registered trademarks of HDMI Licensing LLC in the United States and other countries. Manufactured under license from Dolby Laboratories. Dolby and the double-D symbol are trademarks of Dolby Laboratories. ENERGY STAR® is a joint program of the U.S. Environmental Protection Agency and the U.S. Department of Energy helping us all save money and protect the environment through energy efficient products and practices. Information in this specification sheet is subject to change without notice.